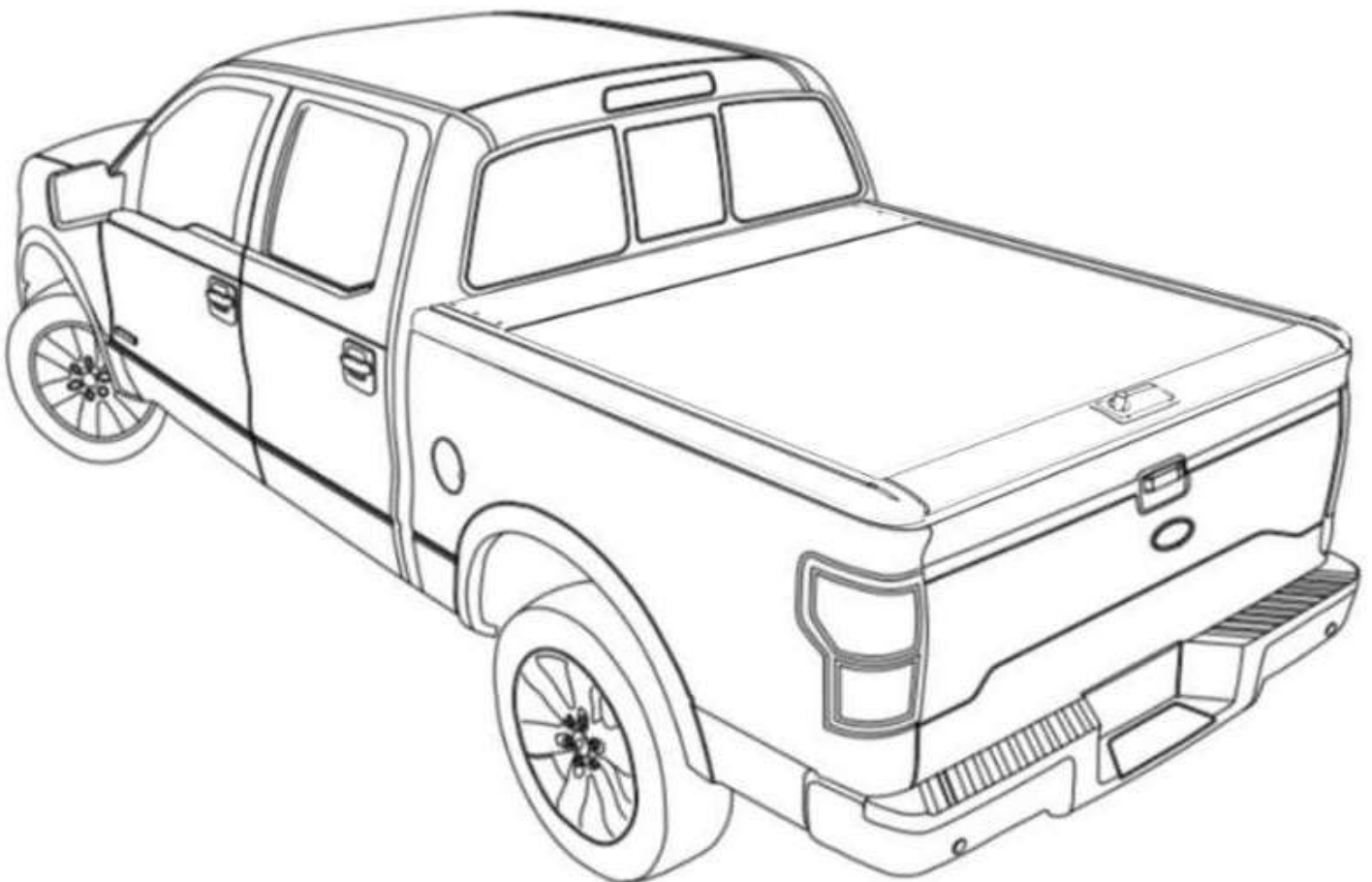


User's Manual of Retractable Tonneau Cover



Accessories List :



A25-Drain Tube



A03- Foaming Adhesive Tape



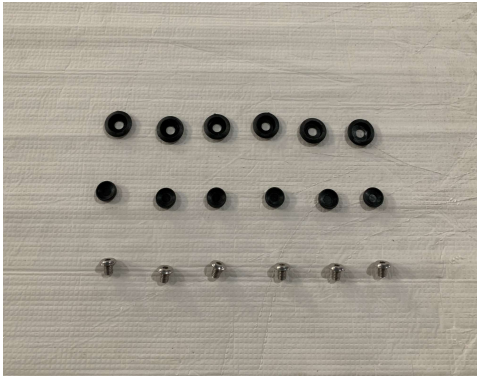
**A21-Tailgate Lock Hook
A18-Self-Tap Screw with Washer 5.5*32**



**A07-Allen Wrench S=5
A19-Allen Wrench S=3**



A15-Round Head Screw M6*12



**A22- Rubber Washer
A16-Rubber Screw Cap
A17-Hex Flat Screw 5*6**



A20-Top Cover



A09- Aluminum Bar

Accessories List :



A18-Self Tap Screw with Washer 5.5*32
A06-M6 Flat Washer



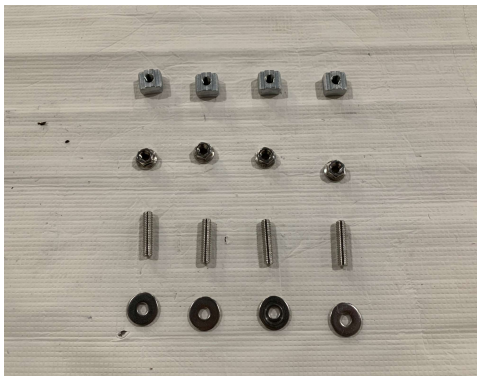
A23- Rubber Cover of Track Front End



A24-Track Angle Shim



A14-Rubber Washer of Drain Tube



A A01-Sliding Nut M6
A04-Nut M6
A02-Screw Fastener M6*25
A06-M6 Flat Washer



A08-Clamp Bracket
A05-Round Head Bolt M8X40
A11-M8 Flat Washer
A12-M8 Spring Washer



A13-Track

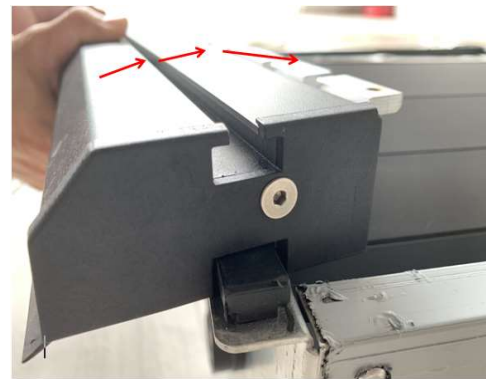


A26- Lubricant (for rust-proof and noise-reducing)

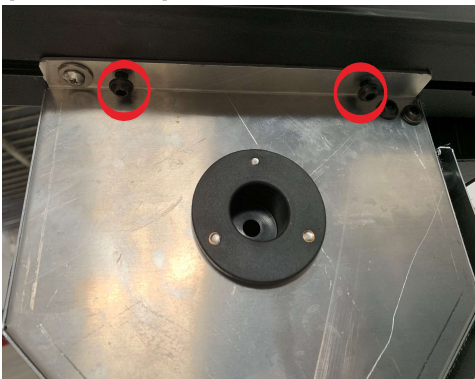
Installation Steps:



Then put on Rubber Cover on Track Front End (A13 A23)



Fix the Track along with the positioning stud(A13)



Fix the Track with two Fastener M6*25 Screws in the above picture(A02)



Check if the side bars and the front middle bar are horizontal before installing



If not horizontal, then adjust the lower side bar with A24 Track Angle Shim or A03 Foaming Adhesive Tape



If not horizontal, then adjust the lower side bar with A24 Track Angle Shim or A03 Foaming Adhesive Tape

Installation Steps:



Placed the assembled parts in the bed (this will require 2 people)



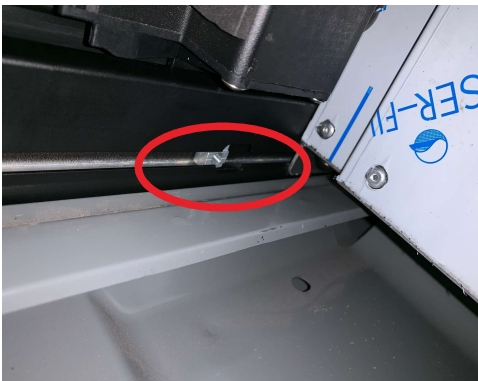
Adjust the assembled parts to the perfect position



Adjust the assembled parts to the perfect position



Adjust the Track to the center position with aluminum bar (A09)



Find this track entrance, then insert the sliding nut M6 into the track (A02 A01)



Place the assembled sliding nut kit on the track and slide to proper place (A04 A01)



Install the Clamp Bracket (A08 A05 A11 A12)



Install the Clamp Bracket (A08 A05 A11 A12)

Installation Steps:



Assemble the Top Cover A20 with aligning the above screw holes



Install the rubber washer A16 and tighten screw A17



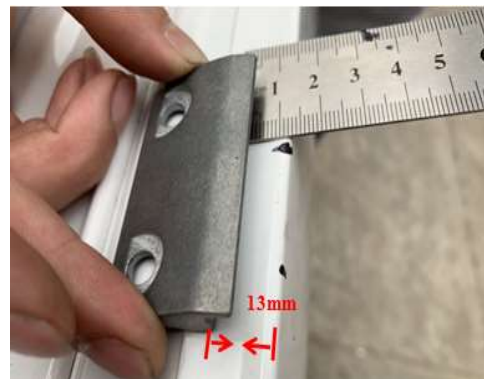
Put on the Rubber Screw Cap (A16 A17 A22)



Route the end of the drain tubes out from the holes.



Route the end of the drain tubes out any existing drain holes present in the bed. (A25)



If there is no lock hook on the tailgate of your Pickup, then you need to install the above supplied lock hook on exactly the right place corresponding to the Tonneau Cover lock. The distance between lock and back door is 13mm (A21 A18)



After measuring the right position, then install the lock (A21 A18)



Install the light at the position where customer prefer



Effect after installation

Helpful Maintenance Hints

- 1. To assure quiet, smooth operation of your cover regularly clean and then lubricate the rail tracks and canister. How often will depend on the environment and the type of lubricant used. We recommend using the one we supplied or other lubricants you prefer can also be used. Avoid using petroleum-based product on rubber seals. Lighter oil spray lubes with PTFE (Teflon) seem to work the best when regularly wiped out and reapplied.**
- 2. Use a dry lube when the maintenance intervals will be longer. They don't lubricate as well but seem to have a little better staying power and they don't attract dust.**
- 3. Avoid the thicker grease type because they tend to get sticky and gather a lot of dust and debris and then later dry out. Also Avoid the silicone dry lubes as they tend to cause squealing noise between the sliding components.**
- 4. To clean and lubricate the rail tracks, liberally apply the lubricant to a rag and wipe it inside of the rail tracks, along the underside of the sweep seal and the top of the wear strip. Repeat until the dust and grime has been removed and the components are lubricated.**
- 5. To clean the canister, remove the rail stops, or vertical rails as required, and run the cover out far enough that you can get into the canister. Liberally apply the lubricant to a rag and wipe the inside of the canister. When clean lubricate the components in the canister. While in the canister ensure the Drain Tubes are clear of any debris or blockage. Reassembly the cover.**
- 6. To help keep the cover looking its best, we recommend washing it the same as caring for your truck finish.**